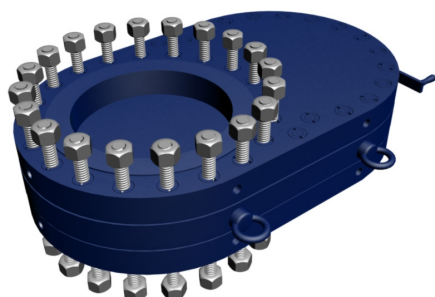


Slim Valves

Class 300 & 600



Sizes 4" (100mm) through 14" (350mm)
Hand Operated

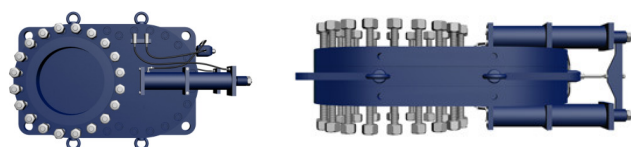
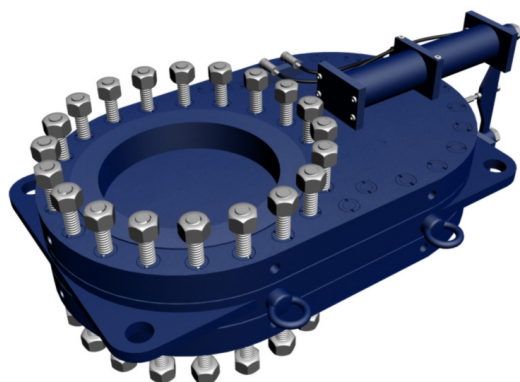
The **SLIM VALVES CLASS 300 & 600** are designed to be used with Hot-Tap & Linestop equipment and fittings.

Specifically designed for Hot-Tap and Linestop Operations, its compact face-to-face dimension reduces the length needed for the drilling machine's boring bar to make taps and therefore the installation time. Handling becomes easier and enables to use it where only small space is available.

It is bidirectional and can be installed on the fitting in any direction (parallel or perpendicular to the pipeline).

It is available in sizes 4" to 36" but larger sizes are available upon customer request.

The **SLIM VALVES CLASS 300 & 600** sized 18" and more are opened and closed with hydraulic equipment. Furthermore they are equipped with an internal equalization pressure system. Each Slim Valve is tested at 1.5 the maximum working pressure to guarantee its proofness.

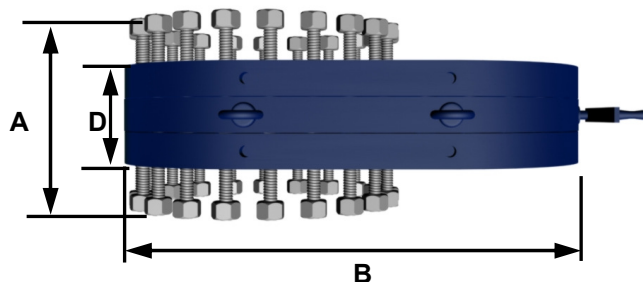
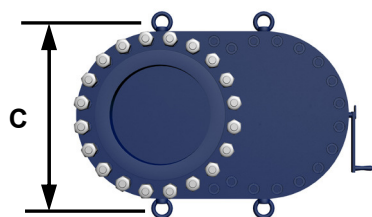


Sizes from 18" (457mm) Hydraulically operated

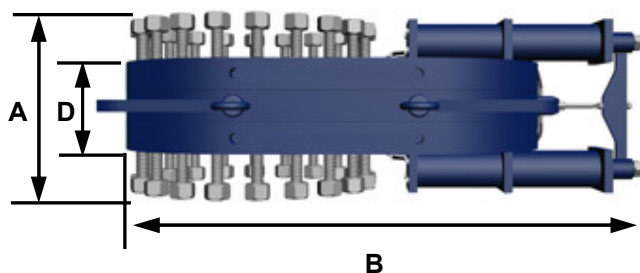
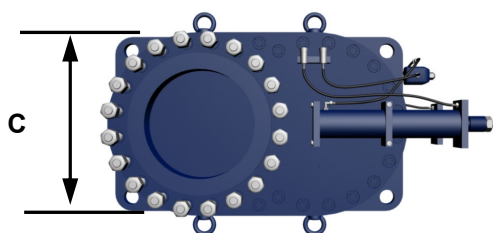
All Slim Valves have passed a Hydrostatic Testing. There are other tests available according to the client's specifications.



We stay in line



SLIM VALVE CLASS 300												
Size		W	A		B		C		D		Class 300 Stock Number	
inch	mm	kg	inch	mm	inch	mm	inch	mm	inch	mm		
4	100	68	9,2	233,7	20,3	515,6	10,0	254,0	4,2	106,7	VS-04-300	
6	150	116	10,2	259,1	25,0	635,0	12,5	317,5	5,0	127,0	VS-06-300	
8	200	185	11,5	292,1	29,5	749,3	15,0	381,0	5,5	139,7	VS-08-300	
10	250	340	13,0	330,2	34,0	863,6	17,5	444,5	7,0	177,8	VS-10-300	
12	300	520	14,2	360,7	39,4	1000,8	20,5	520,7	7,2	182,9	VS-12-300	
14	350	725	16,0	406,4	42,0	1066,8	23,0	584,2	7,7	195,6	VS-14-300	
18	450	1050	18,7	475,0	47,5	1206,5	28,0	711,2	10,0	254,0	VS-18-300	
20	600	1455	19,5	495,3	56,0	1422,4	30,5	774,7	10,3	261,6	VS-20-300	
22	550	2175	20,5	520,7	72,0	1828,8	30,5	774,7	10,5	266,7	VS-22-300	
24	600	2405	22,2	563,9	95,0	2413,0	36,0	914,4	12,5	317,5	VS-24-300	
26	650	3130	25,7	652,8	108,0	2743,2	38,5	977,9	14,0	355,6	VS-26-300	
30	750	4530	28,0	711,2	118,0	2997,2	43,0	1092,2	16,2	411,5	VS-30-300	
36	900	5030	32,0	812,8	135,0	3429,0	50,0	1270,0	20,0	508,0	VS-36-300	



SLIM VALVE CLASS 600												
Size		W	A		B		C		D		Class 600 Stock Number	
inch	mm	kg	inch	mm	inch	mm	inch	mm	inch	mm		
4	100	80	10,7	271,8	21,3	541,0	10,0	254,0	5,0	127,0	VS-04-600	
6	150	240	13,5	342,9	26,2	665,5	24,0	609,6	6,5	165,1	VS-06-600	
8	200	251	14,2	360,7	31,3	795,0	16,5	419,1	7,3	185,4	VS-08-600	
10	250	431	16,5	419,1	37,0	939,8	20,0	508,0	8,0	203,2	VS-10-600	
12	300	680	18,5	469,9	41,0	1041,4	22,0	558,8	9,2	233,7	VS-12-600	
14	350	860	19,2	487,7	43,2	1097,3	23,5	596,9	10,1	256,5	VS-14-600	
16	400	1360	21,3	541,0	48,5	1231,9	27,0	685,8	11,2	284,5	VS-16-600	
18	450	1700	24,0	609,6	54,0	1371,6	29,7	754,4	13,5	342,9	VS-18-600	
20	600	2130	24,7	627,4	57,2	1452,9	32,0	812,8	13,5	342,9	VS-20-600	
22	550	2810	25,3	642,6	62,3	1582,4	34,5	876,3	14,0	355,6	VS-22-600	
24	600	2855	28,5	723,9	101,5	2578,1	37,0	939,8	14,0	355,6	VS-24-600	
26	650	3835	30,0	762,0	105,0	2667,0	40,0	1016,0	16,5	419,1	VS-26-600	
30	750	5340	33,5	850,9	119,5	3035,3	44,5	1130,3	17,5	444,5	VS-30-600	
36	900	10425	40,8	1036,3	140,7	3573,8	52,0	1320,8	25,5	647,7	VS-36-600	

Larger sizes can be designed upon customer's request

The figures indicated on the chart above may vary

TECPESA, S.A.

Balmes 129 Bis, 1º, 1ª - 08008 Barcelona - Spain
Tel: +34 934 510 760 Fax: +34 934 510 793

sales@tecpepa.com
www.tecpepa.com