

# Hot-Tap Equipment

## Specification Sheet TBL-0664

### SPECIFICATION FOR TBL-0664 TAPPING EQUIPMENT

Tapping Range	4" through 16"
Boring Bar Travel	66" (1676 mm)
Standard Auto Feed	0.004" per rev. (0.1mm per rev.)
Speed	30 to 37 rpm Variable
Maximum Operating Pressure	1480 PSI @ 100 F (102 bar @ 38°C)
Maximum Operating Temp	500 F @ 1195 PSI (260°C @ 82 bar)
Adaptor Connection	4" Class 600 RTJ
Unrigged weight	880 lb (400 kg)

### TRANSPORTATION UNIT

Mounting Brackets to Secure Drilling Equipment in Transit
Tool Box with Ancillary Tools
Detachable Ladder and Working Platform

#### Supplied complete with:

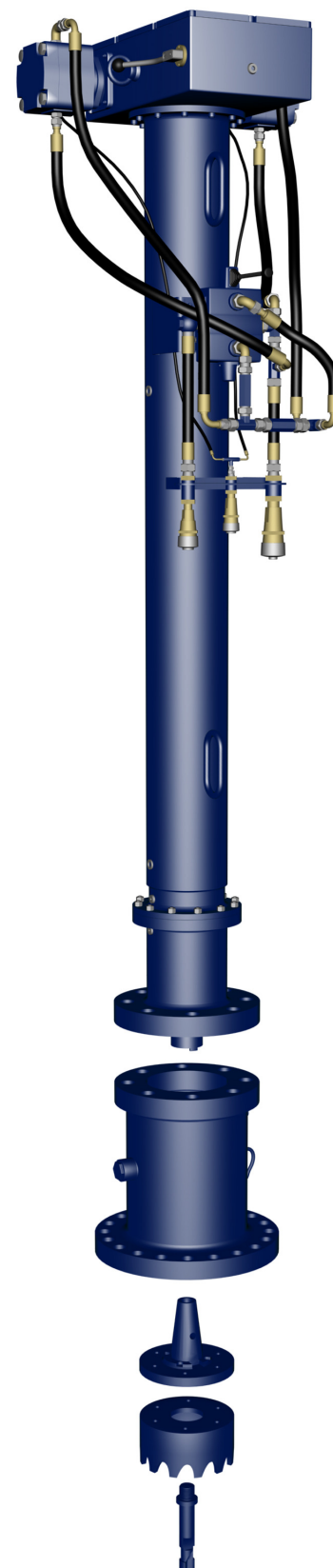
- Duel High Torque Drive Motors
- Machine Transportation Unit
- Measuring Rod
- Vent & Purge Valve
- Tool Kit Comprising:
  - Toolbox*
  - Retainer Screw Wrench*
  - Drive Tube Bearing Retainer Wrench*
  - Inner Chevron Packing Tool*
  - Outer Chevron Packing Tool*
  - Inner Packing Retainer Wrench*
  - Outer Packing Retainer Wrench*
  - 1.7/16" Combination Spanner*
  - Crank Handle*
  - 4" 600 RTJ Gasket*
  - 1 set Machine to Adaptor Bolts (No 8 – 7/8" UNC x 3" Long)*
- Operations & Maintenance Manual

### HPP-0081 Hydraulic Power Pack (USE FOR TBL-0664 TAPPING EQUIPMENT)

Engine Output	34.4 Hp (25.3Kw) @ 2350 rpm
Pressure Relief Setting	2175 PSI (150 bar)
Gear Pump Volume & Delivery	50.9 cc/rev. 81 l/min @ 1850 rpm
Hydraulic Oil Tank Capacity	36 Gallons (165 Liters)
Flow Control	0 - 28 Gallons/Min (0 -127 l/min)
Weight	2200 lb. (1000 kg).
Dimensions	H 1400mm W 900mm L 1300mm

#### Supplied complete with:

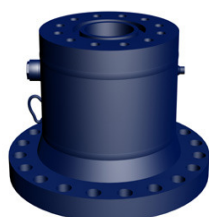
- Hatz 2 Cylinder Diesel Engine
- Electric Start
- Hazardous Atmosphere Shut Off Valve
- Spark Arrester
- Pressure Relief Valve
- Suction and Return Filters
- Pressure Gauge
- Variable Flow Control
- Flow On/Off Valve
- 3/4" x 50 ft Pressure Hose with Industry Standard Quick Connection
- 1" x 50 ft Return Hose with Industry Standard Quick Connection
- 3/8" x 50 ft Drain Hose with Industry Standard Quick Connection
- Hydraulic Oil Tank



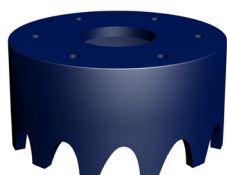


We stay in line

## ACCESORIES FOR: TBL-0664

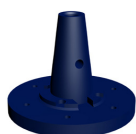


RAISED FACE (RF) ADAPTOR (FOR TBL-0664)				
Size		Class 150	Class 300	Class 600
inch	mm	Stock Number	Stock Number	Stock Number
4	100	CP-664-04-150	CP-664-04-300	CP-664-04-600
6	150	CP-664-06-150	CP-664-06-300	CP-664-06-600
8	200	CP-664-08-150	CP-664-08-300	CP-664-08-600
10	250	CP-664-10-150	CP-664-10-300	CP-664-10-600
12	300	CP-664-12-150	CP-664-12-300	CP-664-12-600
14	350	CP-664-14-150	CP-664-14-300	CP-664-14-600
16	400	CP-664-16-150	CP-664-16-300	CP-664-16-600



STANDARD CUTTER (for TBL-0664)		
Size		Stock Number
inch	mm	Stock Number
4	87	FR-664-04-87
6	139	FR-664-06-139
8	186	FR-664-08-186
10	241	FR-664-10-241
12	292	FR-664-12-292
14	324	FR-664-14-324
16	373	FR-664-16-373

LINESTOP CUTTER (for TBL-0664)		
Size		Stock Number
inch	mm	Stock Number
4	98	FR-664-04-98
6	149	FR-664-06-149
8	198	FR-664-08-198
10	248	FR-664-10-248
12	298	FR-664-12-298
14	332	FR-664-14-332
16	383	FR-664-16-383



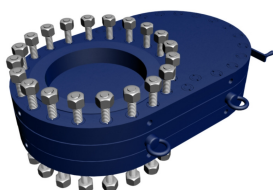
CUTTER HOLDER (for TBL-0664)		
Size		Stock Number
inch	mm	Stock Number
4	100	PF-664-04
6 - 16	150 - 400	PF-664-06.16



PILOT DRILL (for TBL-0664)		
inch	mm	Stock Number
4	100	BR-664-04
6	150	BR-664-06
8	200	BR-664-08
10	250	BR-664-10
12	300	BR-664-12
14	350	BR-664-14
16	400	BR-664-16



AUTOBLOCK PLUG HOLDER (for TBL-0664)		
Size		Stock Number
inch	mm	Stock Number
4 - 16	100 - 400	PT-664-04.16



SLIM VALVES (FOR TBL-0664)				
Size		Class 150	Class 300	Class 600
inch	mm	Stock Number	Stock Number	Stock Number
4	100	VS-04-150	VS-04-300	VS-04-600
6	150	VS-06-150	VS-06-300	VS-06-600
8	200	VS-08-150	VS-08-300	VS-08-600
10	250	VS-10-150	VS-10-300	VS-10-600
12	300	VS-12-150	VS-12-300	VS-12-600
14	350	VS-14-150	VS-14-300	VS-14-600
16	400	VS-16-150	VS-16-300	VS-16-600

The figures indicated on the chart above may change

**TECPESA, S.A.**

Balmes 129 Bis, 1º, 1ª - 08008 Barcelona - Spain  
 Tel: +34 934 510 760 Fax: +34 934 510 793

sales@tecpea.com  
 www.tecpea.com