

Linestop Equipment

Hydraulic Cylinder

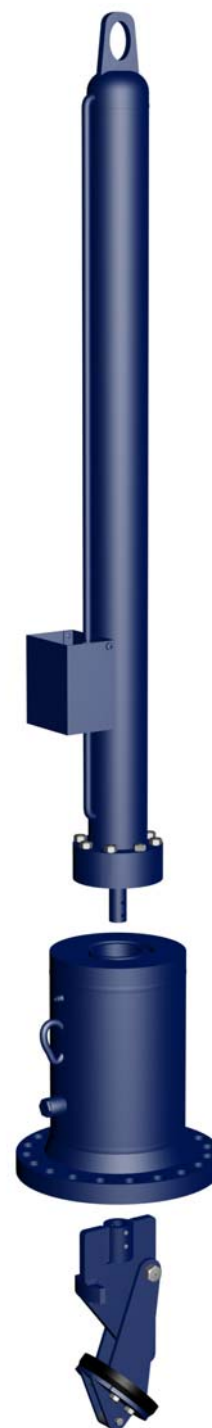
TBL-ACT0412
TBL-ACT1420

The **TECPESA Hydraulic Cylinder** are used to temporary isolate a section of a pipeline for maintenance (repairs or additions) without shutdown of the line.

The **Hydraulic Cylinder** is used with the corresponding housing and plugging head according to the diameter of the line.

Covering a range from 4" to 48", the different **Hydraulic Cylinder** have a maximum working pressure of 102 bars (1.480 PSI) and a maximum operating temperature of 83°C (181 F).

The **Hydraulic Cylinder** has a control bar with a direct reading scale and sight hole enabling indication and control of the progression of the plugging head. Operation is made easy by way of the position of the control valve situated at the lower end of the Hydraulic Cylinder.



TBL-ACT0412 HYDRAULIC CYLINDER

Plugging head size range	4" through 12"
Hydraulic oil capacity	29,5 litres (6,5 Imp Gallons)
Control Bar Reach	72" (1829 mm)
Length	136" (3440 mm)
Weight	135 kg (297 lb)

TBL-ACT1420 HYDRAULIC CYLINDER

Plugging head size range	14" through 20"
Hydraulic oil capacity	87 litres (19 Imp Gallons)
Control Bar Reach	102" (2641 mm)
Length	135" (3440 mm)
Weight	450 kg (992 lb)

HYDRAULIC SYSTEM REQUIREMENTS

Flow Rate	Variable
Pressure	69 bar (1000 PSI)



We stay in line

ACCESORIES FOR: TBL-ACT0412 TBL-ACT1420

TBL-ACT0412



LINESTOP HOUSING (FOR TBL-ACT0412)					
Size		Class 150	Class 300	Class 600	
inch	mm	Stock Number	Stock Number	Stock Number	
4	100	CIL-ACT0412-04-150	CIL-ACT0412-04-300	CIL-ACT0412-04-600	
6	150	CIL-ACT0412-06-150	CIL-ACT0412-06-300	CIL-ACT0412-06-600	
8	200	CIL-ACT0412-08-150	CIL-ACT0412-08-300	CIL-ACT0412-08-600	
10	250	CIL-ACT0412-10-150	CIL-ACT0412-10-300	CIL-ACT0412-10-600	
12	300	CIL-ACT0412-12-150	CIL-ACT0412-12-300	CIL-ACT0412-12-600	



SLIM VALVES (FOR TBL-ACT0412)					
Size		Class 150	Class 300	Class 600	
inch	mm	Stock Number	Stock Number	Stock Number	
4	100	VS-04-150	VS-04-300	VS-04-600	
6	150	VS-06-150	VS-06-300	VS-06-600	
8	200	VS-08-150	VS-08-300	VS-08-600	
10	250	VS-10-150	VS-10-300	VS-10-600	
12	300	VS-12-150	VS-12-300	VS-12-600	



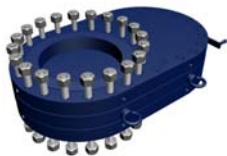
LINESTOP HEAD (for TBL-ACT0412)			
Size		Class 600	
inch	mm	Stock Number	
4	100	CO-ACT0412-04-600	
6	150	CO-ACT0412-06-600	
8	200	CO-ACT0412-08-600	
10	250	CO-ACT0412-10-600	
12	300	CO-ACT0412-12-600	



SEALING ELEMENT (FOR TBL-ACT0412)				
Size		Class 150	Class 600	
inch	mm	Stock Number	Stock Number	
4	100	ES-04-150	ES-04-600	
6	150	ES-06-150	ES-06-600	
8	200	ES-08-150	ES-08-600	
10	250	ES-10-150	ES-10-600	
12	300	ES-12-150	ES-12-600	



LINESTOP HOUSING (FOR TBL-ACT1420)					
Size		Class 150	Class 300	Class 600	
inch	mm	Stock Number	Stock Number	Stock Number	
14	350	CIL-ACT1420-14-150	CIL-ACT1420-14-300	CIL-ACT1420-14-600	
16	400	CIL-ACT1420-16-150	CIL-ACT1420-16-300	CIL-ACT1420-16-600	
18	450	CIL-ACT1420-18-150	CIL-ACT1420-18-300	CIL-ACT1420-18-600	
20	500	CIL-ACT1420-20-150	CIL-ACT1420-20-300	CIL-ACT1420-20-600	



SLIM VALVES (FOR TBL-ACT1420)					
Size		Class 150	Class 300	Class 600	
inch	mm	Stock Number	Stock Number	Stock Number	
14	350	VS-14-150	VS-14-300	VS-14-600	
16	400	VS-16-150	VS-16-300	VS-16-600	
18	450	VS-18-150	VS-18-300	VS-18-600	
20	500	VS-20-150	VS-20-300	VS-20-600	

TBL-ACT1420



LINESTOP HEAD (for TBL-ACT1420)			
Size		Class 600	
inch	mm	Stock Number	
14	350	CO-ACT1420-14-600	
16	400	CO-ACT1420-16-600	
18	450	CO-ACT1420-18-600	
20	500	CO-ACT1420-20-600	



SEALING ELEMENT (FOR TBL-ACT1420)				
Size		Class 150	Class 600	
inch	mm	Stock Number	Stock Number	
14	350	ES-14-150	ES-14-600	
16	400	ES-16-150	ES-16-600	
18	450	ES-18-150	ES-18-600	
20	500	ES-20-150	ES-20-600	

The figures indicated on the chart above may change

TECPESA, S.A.

Balmes 129 Bis, 1º, 1ª - 08008 Barcelona - Spain
Tel: +34 934 510 760 Fax: +34 934 510 793

sales@tecpeasa.com
www.tecpeasa.com

Linestop Equipment

Hydraulic Cylinder

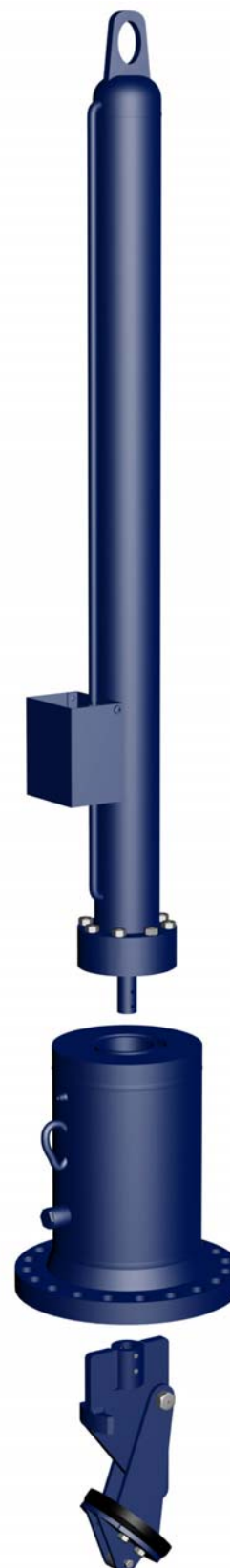
TBL-ACT2234
TBL-ACT3648

The **TECPESA Hydraulic Cylinder** are used to temporary isolate a section of a pipeline for maintenance (repairs or additions) without shutdown of the line.

The **Hydraulic Cylinder** is used with the corresponding housing and plugging head according to the diameter of the line.

Covering a range from 4" to 48", the different **Hydraulic Cylinder** have a maximum working pressure of 102 bars (1.480 PSI) and a maximum operating temperature of 83°C (181 F).

The **Hydraulic Cylinder** has a control bar with a direct reading scale and sight hole enabling indication and control of the progression of the plugging head. Operation is made easy by way of the position of the control valve situated at the lower end of the Hydraulic Cylinder.



TBL-ACT2234 HYDRAULIC CYLINDER	
Plugging head size range	22" through 34"
Hydraulic oil capacity	191 litres (42 Imp Gallons)
Control Bar Reach	140" (3556 mm)
Length	176" (4468 mm)
Weight	740 kg (1630 lb)
TBL-ACT3648 HYDRAULIC CYLINDER	
Plugging head size range	36" through 48"
Hydraulic oil capacity	291 litres (64 Imp Gallons)
Control Bar Reach	140" (3556 mm)
Length	176" (4468 mm)
Weight	1320 kg (2910 lb)
HYDRAULIC SYSTEM REQUIREMENTS	
Flow Rate	Variable
Pressure	69 bar (1000 PSI)



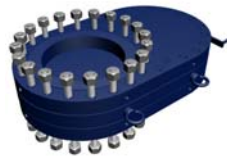
We stay in line

ACCESORIES FOR: TBL-ACT2234 TBL-ACT3648



LINESTOP HOUSING (FOR TBL-ACT2234)				
Size		Class 150	Class 300	Class 600
inch	mm	Stock Number	Stock Number	Stock Number
22	550	CIL-ACT2234-22-150	CIL-ACT2234-22-300	CIL-ACT2234-22-600
24	600	CIL-ACT2234-24-150	CIL-ACT2234-24-300	CIL-ACT2234-24-600
26	650	CIL-ACT2234-26-150	CIL-ACT2234-26-300	CIL-ACT2234-26-600
28	700	CIL-ACT2234-28-150	CIL-ACT2234-28-300	CIL-ACT2234-28-600
30	750	CIL-ACT2234-30-150	CIL-ACT2234-30-300	CIL-ACT2234-30-600
32	800	CIL-ACT2234-32-150	CIL-ACT2234-32-300	CIL-ACT2234-32-600
34	850	CIL-ACT2234-34-150	CIL-ACT2234-34-300	CIL-ACT2234-34-600

TBL-ACT2234



SLIM VALVES (FOR TBL-ACT2234)				
Size		Class 150	Class 300	Class 600
inch	mm	Stock Number	Stock Number	Stock Number
22	550	VS-22-150	VS-22-300	VS-22-600
24	600	VS-24-150	VS-24-300	VS-24-600
26	650	VS-26-150	VS-26-300	VS-26-600
28	700	VS-28-150	VS-28-300	VS-28-600
30	750	VS-30-150	VS-30-300	VS-30-600
32	800	VS-32-150	VS-32-300	VS-32-600
34	850	VS-34-150	VS-34-300	VS-34-600



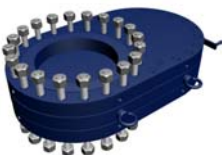
LINESTOP HEAD (for TBL-ACT2234)		
Size		Class 600
inch	mm	Stock Number
22	550	CO-ACT2234-22-600
24	600	CO-ACT2234-24-600
26	650	CO-ACT2234-26-600
28	700	CO-ACT2234-28-600
30	750	CO-ACT2234-30-600
32	800	CO-ACT2234-32-600
34	850	CO-ACT2234-34-600



SEALING ELEMENT (FOR TBL-ACT2234)			
Size		Class 150	Class 600
inch	mm	Stock Number	Stock Number
22	550	ES-22-150	ES-22-600
24	600	ES-24-150	ES-24-600
26	650	ES-26-150	ES-26-600
28	700	ES-28-150	ES-28-600
30	750	ES-30-150	ES-30-600
32	800	ES-32-150	ES-32-600
34	850	ES-34-150	ES-34-600



LINESTOP HOUSING (FOR TBL-ACT3648)				
Size		Class 150	Class 300	Class 600
inch	mm	Stock Number	Stock Number	Stock Number
36	900	CIL-ACT3648-36-150	CIL-ACT3648-36-300	CIL-ACT3648-36-600
38	950	CIL-ACT3648-38-150	CIL-ACT3648-38-300	CIL-ACT3648-38-600
40	1000	CIL-ACT3648-40-150	CIL-ACT3648-40-300	CIL-ACT3648-40-600
42	1050	CIL-ACT3648-42-150	CIL-ACT3648-42-300	CIL-ACT3648-42-600
44	1100	CIL-ACT3648-44-150	CIL-ACT3648-44-300	CIL-ACT3648-44-600
46	1150	CIL-ACT3648-46-150	CIL-ACT3648-46-300	CIL-ACT3648-46-600
48	1200	CIL-ACT3648-48-150	CIL-ACT3648-48-300	CIL-ACT3648-48-600



SLIM VALVES (FOR TBL-ACT3648)				
Size		Class 150	Class 300	Class 600
inch	mm	Stock Number	Stock Number	Stock Number
36	900	VS-36-150	VS-36-300	VS-36-600
38	950	VS-38-150	VS-38-300	VS-38-600
40	1000	VS-40-150	VS-40-300	VS-40-600
42	1050	VS-42-150	VS-42-300	VS-42-600
44	1100	VS-44-150	VS-44-300	VS-44-600
46	1150	VS-46-150	VS-46-300	VS-46-600
48	1200	VS-48-150	VS-48-300	VS-48-600

TBL-ACT3648



LINESTOP HEAD (for TBL-ACT3648)		
Size		Class 600
inch	mm	Stock Number
36	900	CO-ACT3648-36-600
38	950	CO-ACT3648-38-600
40	1000	CO-ACT3648-40-600
42	1050	CO-ACT3648-42-600
44	1100	CO-ACT3648-44-600
46	1150	CO-ACT3648-46-600
48	1200	CO-ACT3648-48-600



SEALING ELEMENT (FOR TBL-ACT3648)			
Size		Class 150	Class 600
inch	mm	Stock Number	Stock Number
36	900	ES-36-150	ES-36-600
38	950	ES-38-150	ES-38-600
40	1000	ES-40-150	ES-40-600
42	1050	ES-42-150	ES-42-600
44	1100	ES-44-150	ES-44-600
46	1150	ES-46-150	ES-46-600
48	1200	ES-48-150	ES-48-600

The figures indicated on the chart above may change

TECPESA, S.A.

Balmes 129 Bis, 1º, 1ª - 08008 Barcelona - Spain
Tel: +34 934 510 760 Fax: +34 934 510 793

sales@tecpeasa.com
www.tecpeasa.com